

3657 Woodland Drive, Port Coquitlam

\$1,990,000



Builder and Investor alert! Rare find well maintained and updated 2 story house with over 6000+ flat yard near Coquitlam center. Super location, minutes walk to Coquitlam center, Sky train station and all other schools. Located in new TOA area, A Must See!

KEY INFORMATION

MLS® R2927884

Residential Detached

Woodland Acres

4 Bedrooms

3 Bathrooms

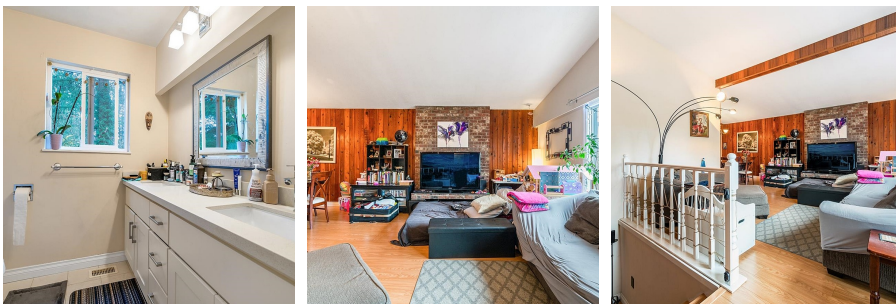
2,423 SF

6,773 SF Lot

FEATURES

Year Built: 1972

Listed By: Pacific Evergreen Realty Ltd.



rennie