

1957 Aspen Avenue, Vancouver

\$4,168,000



Own this Tudor Style home in the sought-after Quilchena neighbourhood, situated between Shaughnessy and Kerrisdale. This impeccably maintained home was gutted and remodelled in 2002 by Bela Construction. The exceptional quality in the craftsmanship and building materials are reflected in the home as it withstands the test of time. The interior features solid wood cabinets, stainless steel kitchen appliances, granite countertops, spacious bedrooms with ensuites, and A/C. Amenities include your very own private outdoor hot tub and a peaceful Japanese Garden for total tranquillity and relaxation. Centrally located, this home is close to DT/UBC, within walking distance of Kerrisdale Village, Arbutus Club, Point Grey Secondary, and Quilchena Elementary.

KEY INFORMATION

MLS® R2929256

Residential Detached

Quilchena

3 Bedrooms

4 Bathrooms

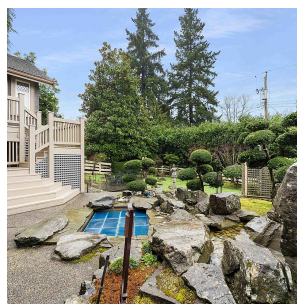
2,846 SF

7,986 SF Lot

FEATURES

Year Built: 1928

Listed By: Oakwyn Realty Ltd.



rennie