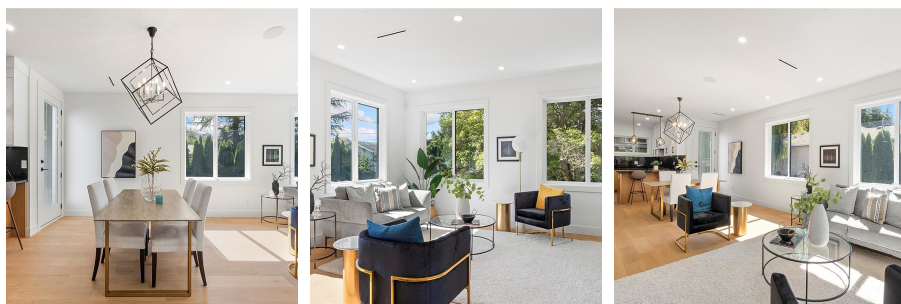
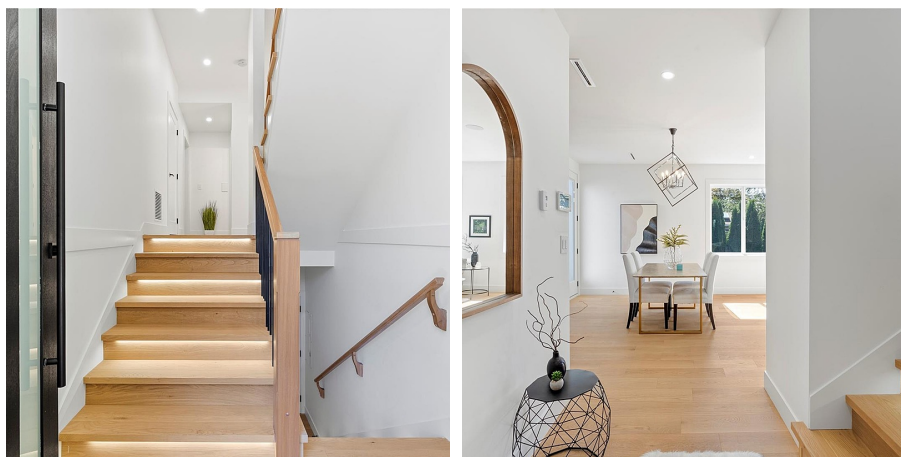


931 Redfern St, Victoria

\$2,068,000



931 Redfern Street, an exceptional custom-built luxury home located in the highly sought after neighbourhood of Fairfield East. This brand-new 5-bedroom, 4-bathroom home offers premium living on a lot just under 5,000 sq ft. Thoughtfully designed with a perfect blend of elegance and modern convenience, this home is ideal for families or anyone looking for a quiet, upscale lifestyle. As you step inside, the open-concept main floor welcomes you with abundant natural light, stunning hardwood flooring, and a seamless flow between the kitchen, dining, and living areas. The gourmet kitchen is equipped with high-end Dacor appliances, gas range stove, luxury quartz countertops, and a sleek two-tone design that exudes sophistication. The living room is perfect for relaxing, with a fireplace creating a warm, inviting atmosphere for loved ones. The home is outfitted with AC for year-round comfort. Upstairs, you'll find 3 spacious bedrooms, including a primary suite with a spa-like ensuite bathroom and ample closet space. On the main floor, there is an add'l bedroom that can be used for guests or elderly family members, or as a home office. The lower level features a fully equipped legal 1-bedroom suite, perfect for generating mortgage support or as a caretaker suite. This suite comes complete w/ a private entrance, full kitchen, and living space, offering both independence and flexibility. Luxury finishes can be found throughout, from the detailed bathroom tiling to staircase lighting and a central vacuum system. This home has EV charging and built in security system. Outside, a private deck and yard offers a peaceful retreat for outdoor relaxation. This property is located near top-rated schools, including Margaret Jenkins Elementary, Monterey Middle, and Oak Bay High School. Close to Beacon Hill Park, beaches, Cook Street Village w/ coffee shops and restaurants, Victoria Golf Course, Patricia Bay Hwy, Trans Canada Hwy. Contact...



rennie