

Lot 4 Willis Point Road, No City Value

\$2,700,000



30.40 acres of rare non-ALR land in Central Saanich, 20 min from Victoria with ocean views. Zoned RC, allows secondary suites and accessory buildings. Hydro/cable at lot line, well drilled, septic approved. Low taxes, prime timber, and development potential. Adjacent lot also available.

KEY INFORMATION

MLS® R2929463

Land Only

Willis Point

0 Bedrooms

0 Bathrooms

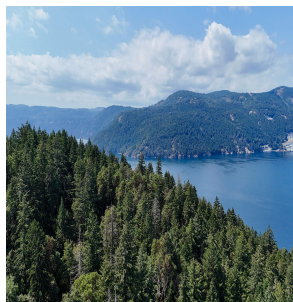
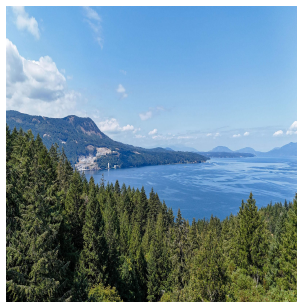
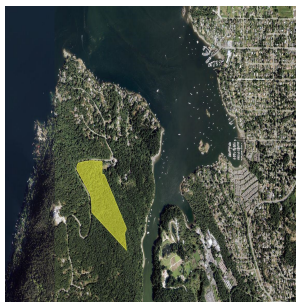
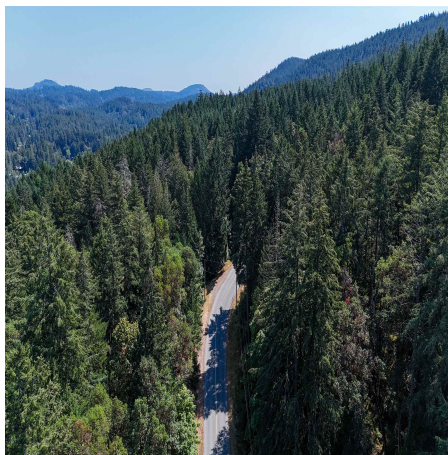
0 SF

30 SF Lot

FEATURES

Views: OCEAN VIEWS OF TOD INLET

Listed By: SOTHEBY'S INTERNATIONAL REALTY CANADA (VR)



rennie