

# 13923 22a Avenue, Surrey

\$2,888,000



Welcome to this 2-level residence on a private 13,982 sq. ft lot that offers 3,458 sq. ft of luxurious living in the most desirable location in Elgin Chantrell. This gorgeous traditional home offers a 4-bedroom, 4-bathroom located on a quiet cul-de-sac, sunny South Surrey's most prestigious area; a true neighborhood in every sense. Features an elegant open floor plan including a private and secure west-facing back garden, updated baths and kitchen, and oversized double garage with storage. Recent updates included a new roof and central air-conditioning. Great location close to, School, Restaurant, public transit! Great Catchment school: Chantrell Creek Elementary & Elgin Park Secondary! Must See!

## KEY INFORMATION

MLS® R2930194

Residential Detached

Elgin Chantrell

4 Bedrooms

4 Bathrooms

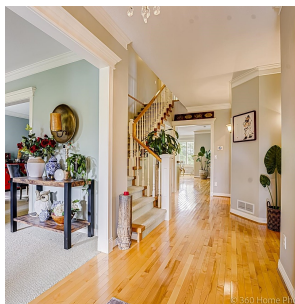
3,458 SF

13,982 SF Lot

## FEATURES

Year Built: 1996

Listed By: RE/MAX Westcoast



rennie