

101 7088 West Saanich Rd, Central Saanich

\$615,000



Fabulous 2 BD/ 2 BTH ground level corner suite in the heart of Brentwood Bay village, overlooking gardens & green space with a separate back entrance & covered patio that make this condo truly feel like a home. Numerous improvements including all new appliances, quartz counters, flooring, lighting, cabinetry, sink, toilet & fixture upgrades. Enjoy the open kitchen layout with a raised bar, electric fireplace in the living room, spacious bedrooms & insuite laundry. Secured entry & U/G parking, friendly pet policy, bike storage & a commons room all add to the appeal. Ideally located near wonderful shops, services, schools & a short stroll to the ocean, charming marinas, farm stands & all the Peninsula has to offer. The ferries & Sidney are a 15 min drive & 20 min to Downtown Victoria. (id:56120)

KEY INFORMATION

MLS® 976423

Residential Attached

Brentwood Bay

2 Bedrooms

2 Bathrooms

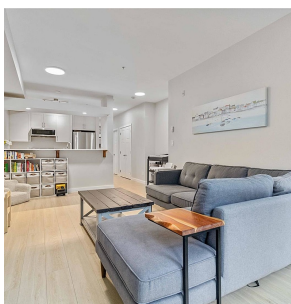
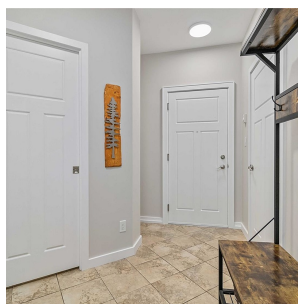
1,055 SF

962 SF Lot

FEATURES

Year Built: 2007

Listed By: Oakwyn Realty Ltd.



rennie