

# 4015 Loyola St, Saanich

\$1,199,000



The spacious main floor with 1200+ sqft has 3 bedrooms, a 4pc bathroom, ensuite, kitchen, dining room, large deck and a large living room with a cozy wood burning fireplace. The lower level, with SUITE POTENTIAL, 3 additional rooms, a 4pc bathroom, laundry room a ceiling heights of approx. 7'10" as per floor plan. The low maintenance and partially fenced-in backyard is perfect for children and pets. NEW ROOF installed in 2022! Gas Furnace, and on Demand hot water tank. This fantastic family friendly neighbourhood is located within walking distance of the University of Victoria, Mt. Douglas Secondary School, Maria Montessori School, Lambrick Park, and a short bike ride or drive to all other amenities. (id:56120)

## KEY INFORMATION

MLS® 977468

Residential Detached

Lambrick Park

6 Bedrooms

3 Bathrooms

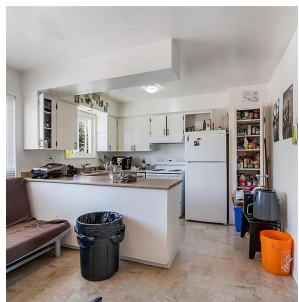
2,452 SF

6,000 SF Lot

## FEATURES

Year Built: 1972

Listed By: Pemberton Holmes - Cloverdale



rennie