

2 5257 Markel Drive, Chilliwack

\$898,000



This Beautiful & Modern Family home is perched in the highly coveted & affluent community of PROMONTORY. Situated along a private tree lined street, this fully custom & newly renovated residence is the epitome of upscale living. The basement area could easily be suited for the in-laws/ extended family. Upstairs has 3 spacious bedrooms and boasts a bright & spacious open concept. The floorplan flows seamlessly to meet your everyday needs. Step into your private fully fenced backyard oasis with a grand entertaining deck, perfect for kids and pets to enjoy. With proximity to shopping, Promontory Elementary school, parks and trails, an effortless lifestyle awaits! NO STRATA FEES! MUST SEE VIRTUAL TOUR!

KEY INFORMATION

MLS® R2930907

Residential Attached

Chilliwack

4 Bedrooms

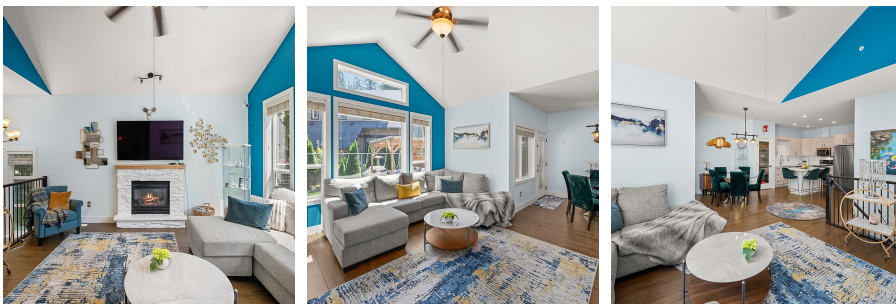
3 Bathrooms

2,152 SF

FEATURES

Year Built: 2011

Listed By: rennie & associates realty ltd.



Eric Zamora PREC*
778.389.4556
ezamora@rennie.com
rennie.com/ericzamora



Shelly Vellani PREC*
604.710.3681
svellani@rennie.com
rennie.com/shellyvellani

rennie