

2320 Chairlift Close, West Vancouver

\$1,988,000



Discover exceptional value in an exclusive neighborhood! This expansive 19,289 sq. ft. cul-de-sac property includes preliminary plans for a 5,000 sq. ft. home by Arsa Design Inc. Enjoy partial city and water views, with potential for enhancement, from most levels. A superb opportunity to construct your dream home on this spacious private property in West Vancouver. Nestled just steps away from the prestigious Collingwood Private School and a short drive to Hollyburn Country Club, Dundarave, and Cypress Bowl Skiing. Don't miss your chance to secure this incredible land offering and realize your vision of bespoke coastal living in one of West Vancouver's most sought-after neighbourhoods. For further details and to request an information package, please contact us today.

KEY INFORMATION

MLS® R2930962

Land Only

Chelsea Park

0 Bedrooms

0 Bathrooms

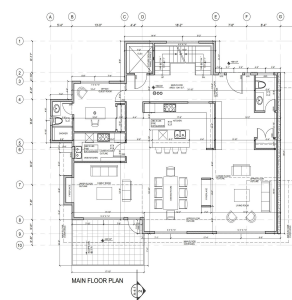
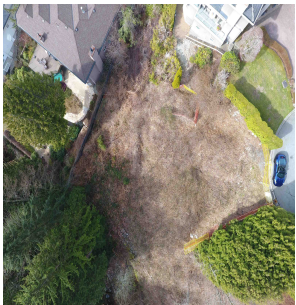
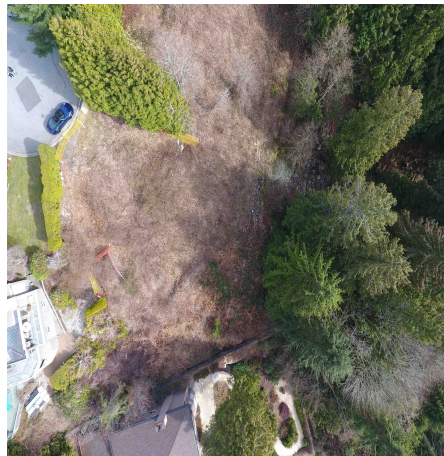
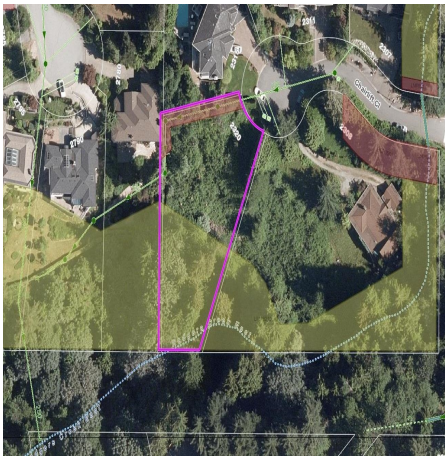
0 SF

19,289 SF Lot

FEATURES

Views: partial water views

Listed By: Bellevue Realty Group



rennie