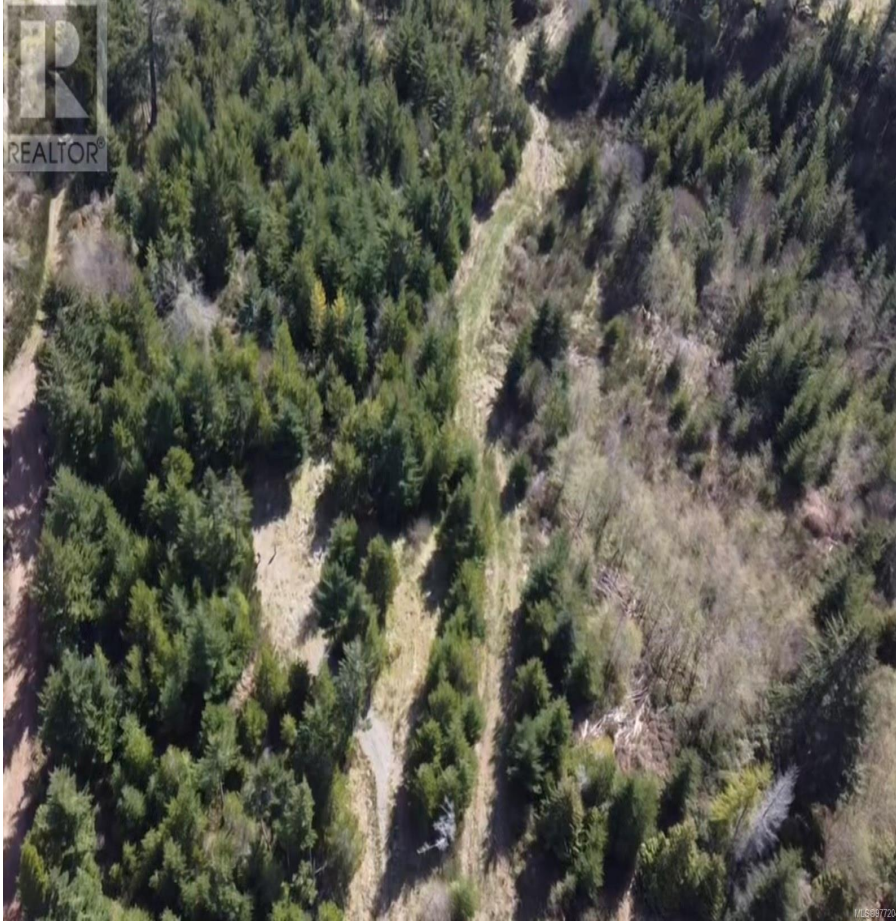


Lot 9 Goldstream Heights Dr, Shawnigan Lake

\$439,000



NO GST! ALREADY PAID BY SELLER

Back country feel with paved access along Goldstream Heights Drive, this serene 5-acre forested property offers convenient access to modern amenities like electricity and Telus Fibre optic services at the road. Potential views of Finlayson Arm and Saanich inlet. With a drilled water well and a constructed driveway already in place, this lot is primed and ready to go. The gently rolling terrain provides abundant usable space, perfect for creating a private sanctuary. Outdoor enthusiasts will appreciate the nearby access to Wigglesworth Lake Park and the Trans Canada Trail, offering countless opportunities for exploration. Seize the opportunity to own this exceptional natural paradise! (id:56120)

KEY INFORMATION

MLS® 977204

Land Only

Malahat Proper

0 Bedrooms

0 Bathrooms

0 SF

225,205 SF Lot

FEATURES

Listed By: Pemberton Holmes - Cloverdale