

29433 Dewdney Trunk Road, Mission

\$749,000



Nestled in the serene landscape of Mission, BC, just over the Maple Ridge border, this charming rancher with basement offers a quaint retreat on 0.5 acres of private land. Built in 1950, the home exudes character and warmth, ideal for those seeking a cozy starter or peace during their retirement. The main floor of 924 sq ft offers 2 bedrooms and 1 bathroom, with an additional 924 sq ft unfinished in the basement. Updates include a new well pump and UV filtration system, pex plumbing, furnace, fresh paint, laminate flooring, washer and dryer, and kitchen blinds. This is your opportunity for country living just 15 minutes outside of the bustling Maple Ridge city centre. Come experience what this unique property has to offer!

KEY INFORMATION

MLS® R2931234

Residential Detached

Stave Falls

2 Bedrooms

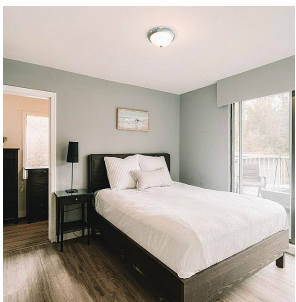
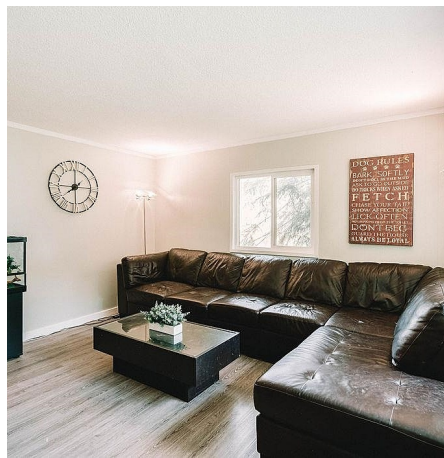
1 Bathroom

1,856 SF

FEATURES

Year Built: 1950

Listed By: Royal LePage Elite West



rennie