

38097 Helm Way, Squamish

\$1,393,900



Presenting the final collection of Parkside Homes - the most sought-after location in the desirable SEAandSKY community by Bosa Properties & Kingswood Properties. Located along the shoreline community park, this CORNER 3 bed + flex home is one of only two in the community and has incredible views of the blind channel on one side and the Chief on the other. Premium upgrades include - air conditioning, Bosch & Miele appliances, heated entryways and ensuite washrooms, premium washer/dryer, vinyl flooring throughout and more. Steps away from the future 17,000 sq ft Activity Centre and pedestrian bridge to downtown. The bridge is under construction and completing this winter. Don't miss your final opportunity to own a Parkside home at SEAandSKY!

KEY INFORMATION

MLS® R2931334

Residential Attached

Valleycliffe

3 Bedrooms

3 Bathrooms

1,533 SF

S
A
S

FEATURES

Year Built: 2024

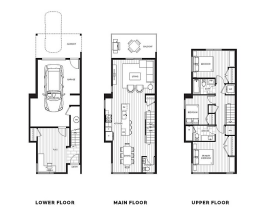
Views: water, park, marina, Chief

Listed By: Bosa Properties Realty Inc.



© 2024 Bosa Properties. All rights reserved. This document is for informational purposes only and does not constitute an offer. The information herein is subject to change without notice. Working with Bosa Properties Realty Inc. is a privilege. Bosa Properties Realty Inc. is a member of the Bosa Group of Companies. Bosa Properties Realty Inc. is an Equal Housing Opportunity and Fair Housing Act Development. Please see our website for more information.

SKY 2.2 BATHROOM Total 1,953 S.F.



YOUR EXCLUSIVE UPGRADES INCLUDE:

- Handcrafted flooring in primary, secondary and living areas
- Handcrafted lighting in primary, secondary and living areas
- Handcrafted vinyl flooring throughout
- Handcrafted vinyl carpeted bedrooms
- Handcrafted vinyl carpeted bedrooms
- Handcrafted vinyl carpeted bedrooms

