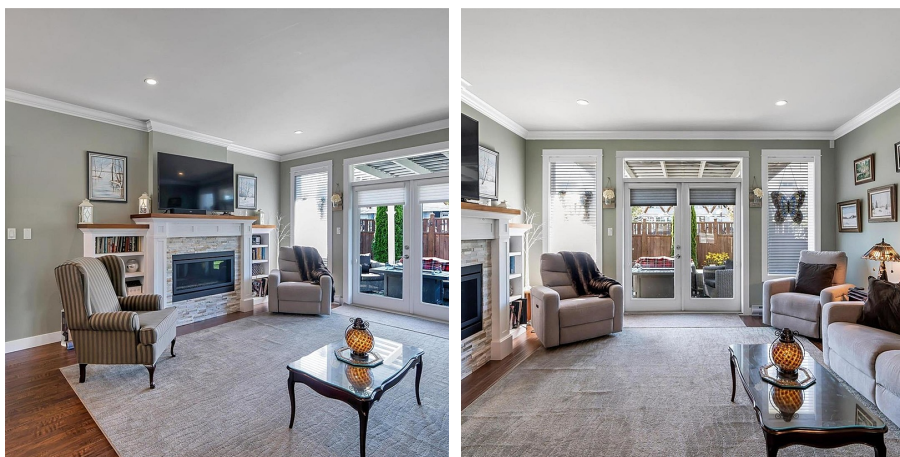


103 1994 John Rd, North Saanich

\$999,000



New price! Welcome to McDonald Park Place in the Sidney/North Saanich border! This modern 4 bed/3 bath detached Arts and Crafts style house is nestled on the North Saanich/Sidney border and situated in a small enclave of properties on a private road. This tastefully designed open concept home has 2 bedrms/2 baths up and a 3rd & 4th bedrm or office down w/3 full baths throughout. Primary bedrm includes spa-like ensuite complete w/separate tub & walk-in closet. Features: modern kitchen w/quartz counters, ss appl, wood cabinetry, tile backsplash, gas range, complete w/pot filler, custom wood mantle w/cozy gas f/p, crown moldings, designer blinds, gas dryer, built-ins for office, large heated crawlspace/storage, Gas BBQ, Fire pit area on deck & custom pergola located in the beautifully sunny patio & private fenced yard. Handy garage & driveway parking. Enjoy ocean side walks nearby & the outdoor lifestyle this location offers! Sidney village shops are all close by, schools, ferries, and the airport. A great neighborhood to call home! (id:56120)



KEY INFORMATION

MLS® 977622

Residential Detached

Sandown

4 Bedrooms

3 Bathrooms

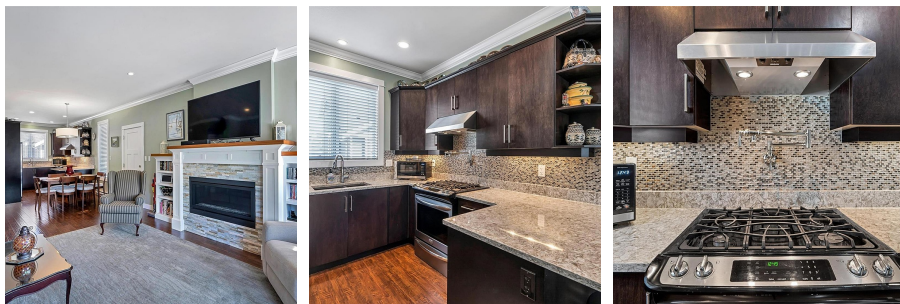
2,046 SF

3,572 SF Lot

FEATURES

Year Built: 2015

Listed By: RE/MAX Camosun



rennie