

3903 13495 Central Avenue, Surrey

\$519,900



Welcome to 3 Civic Plaza! Surrey's academic hub and centre point in a transit focused community. Known as the tallest tower in Surrey Centre, 3 Civic Plaza features a residential component combined with a world class 4-star Hotel, Prado Cafe and Dominion Bar all within the same building. Historically, this '03 unit is the most sought after floorplan due to its great use of space, clear, private outlook and spa like bathroom. Breathtaking views from this bright, East facing unit showcases ultimate privacy, unobstructed panoramic North Shore Mountains and a sweeping City outlook. Steps to rapid transit Skytrain, SFU, KPU, City Hall, Public Library, Central City Mall, Chuck Bailey Recreation Centre and everyday conveniences such as Safeway. Make this hotel inspired home yours today!

KEY INFORMATION

MLS® R2931668

Residential Attached

Whalley

1 Bedroom

1 Bathroom

534 SF

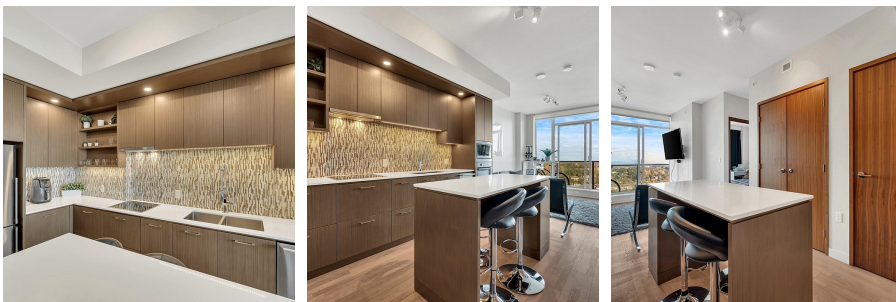
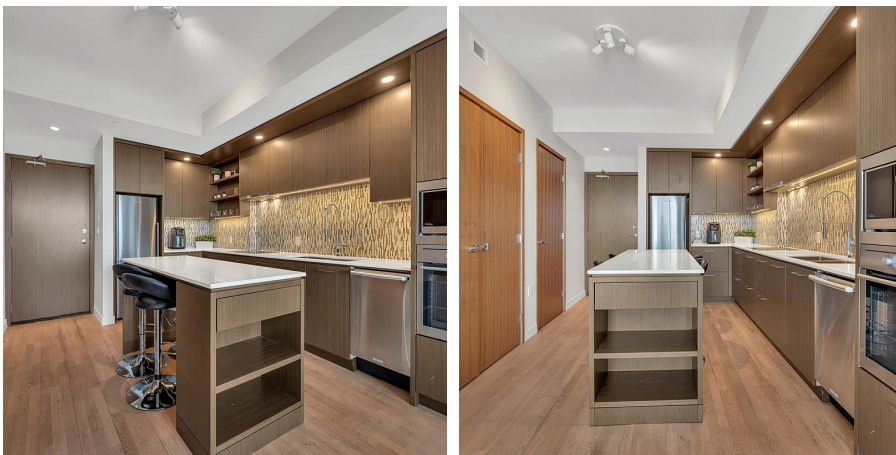
\$351.16 Maintenance Fees

FEATURES

Year Built: 2018

Views: Mountain and Panoramic City

Listed By: rennie & associates realty ltd.



Irene De Guzman

604.720.1996

ideguzman@rennie.com

rennie.com/irenedeguzman

rennie