

117 46150 Thomas Road, Chilliwack

\$749,000



Perfect for investors or first-time buyers, this 4-bedroom townhouse comes with a LEGAL 1-bedroom suite featuring a private entrance and laundry. Both the main house and basement suite are currently rented for a potential total of \$4200/month, with tenants eager to stay. Located within walking distance of schools and shopping, the home offers 3.5 bathrooms, a natural gas fireplace, 9-foot ceilings on the main floor, and a modern kitchen with a gas stove and quartz countertops. There's also a versatile den on the main floor. Pet-friendly (with restrictions on height and breed), this property offers access to parks, trails, and a nearby lake. BASE 10 is a community that has it all, combining convenience with natural beauty.

KEY INFORMATION

MLS® R2932529

Residential Attached

Chilliwack

4 Bedrooms

4 Bathrooms

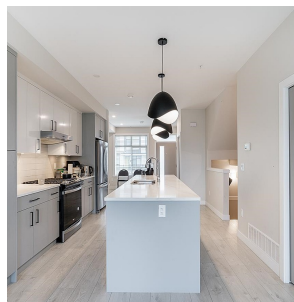
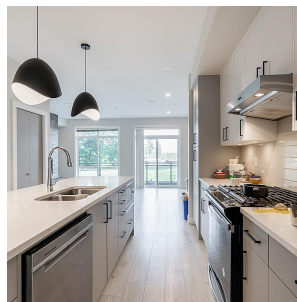
2,072 SF

FEATURES

Year Built: 2022

Views: Mountain View

Listed By: Royal LePage Fairstone Realty.



rennie