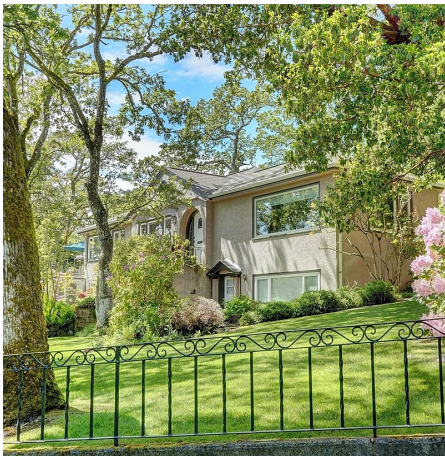


3420 Bonair Pl, Saanich

\$1,975,000



O H- Sun. 1:00-3:00P M This property presents a rare opportunity to acquire a character home nestled on Mt. Tolmie on a no-thru street in a mature country-like setting. Large 0.4-acre lot, surrounded by lovingly maintained gardens. In the family for almost 40 years and is tastefully updated to celebrate this home's Art Deco charm. Nice layout & built for entertaining on the main floor, kitchen area extends out the large Terrace for BBQ with 2 additional patio areas in the garden setting - planted herbal kitchen garden provides veggies too! Offering 5 bedrooms/ 3 bathrooms and 3,192 interior finished square feet, ample storage, Lrg. double garage and this home is perfect for families. The lower level can easily be a 2 bedroom suite providing a separate entrance offering a mortgage helper option with a rental suite or in-law suite . Close to UVIC, Camosun College. Large picture windows in the principal rooms connects the interior to nature and the gorgeous private park-like setting. The primary bedroom with ensuite is on the main level along with 2 more bedrooms & main bathroom. The lower level provides 2 bedrooms & 3 piece bathroom. Heat pump offers AC in the summer and heat in Winter. It is a wonderful family home and is close to SMUS, French Immersion and excellent public schools. Walk to Camosun in 10 minutes and a 15-minute walk to UVIC. Near the Royal Jubilee, Henderson Rec Centre, RVYC, Uplands & Cedar Hill Golf Courses. Bordering Oak Bay and Centrally located in Victoria, near by bus routes and shopping- Hillside Mall and Shelbourne Plaza. Drive 15 minutes to Victoria Harbour. Serene and peaceful from sunset to sunrise, the panoramic views of Victoria are a short walk up the hill to the top. Bordering Oak Bay. This home is truly a gem not to be missed! (id:56120)

KEY INFORMATION

MLS® 977722

Residential Detached

rennie