

35008 North Sward Road, Mission

\$529,500



Situated on a 6,000 square foot lot in lovely rural subdivision just 15 minutes from amenities. Cottage is located on the north side of Hatzic Lake. Dead end street. Excellent opportunity to get into the market.

KEY INFORMATION

MLS® R2932394

Residential Detached

Durieu

1 Bedroom

2 Bathrooms

961 SF

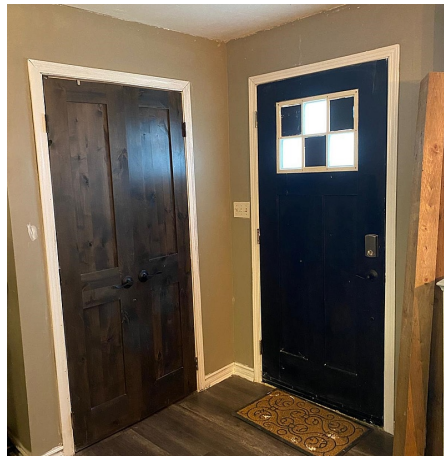
5,773 SF Lot

FEATURES

Year Built: 9999

Views: Mountains

Listed By: Royal LePage - Wolstencroft



rennie