

# 159 1330 Wellon Street, Coquitlam

\$1,668,000



This 4 bed 4.5 bath corner townhome at Polygon's Partington Creek belongs to a new collection of townhomes nestled in Coquitlam's Burke Mountain neighbourhood. This bright 2,641 sq. ft. home boasts overheight main floor ceilings, large windows, and a deck off the kitchen. The kitchen features sleek appliances, stone countertops and an expansive island. Upstairs, find luxury with a spa-inspired ensuite and a separate laundry room with sink, and downstairs enjoy the addition of a recreation room plus flex space. Enjoy a side-by-side double-car garage equipped with level 2 EV charging, AC and access to the Creekside Club! Visit our sales office and three display homes at 3674 Victoria Drive to learn more.

## KEY INFORMATION

MLS® R2932104

Residential Attached

Burke Mountain

4 Bedrooms

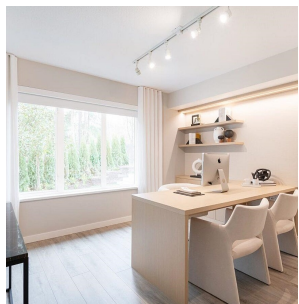
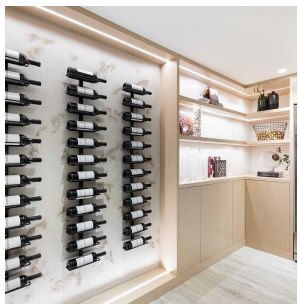
5 Bathrooms

2,641 SF

## FEATURES

Year Built: 2025

Listed By: Polygon Realty Limited



rennie