

1008 3008 Glen Drive, Coquitlam

\$608,888



Discover metropolitan living at Coquitlam Centre in this rarely available 1-bedroom + flex, 625 sq. ft., south-facing unit at M2 by Cressey. This bright and functional home features laminate flooring, the signature Cressey kitchen with granite countertops, stainless steel appliances, and a built-in workstation. The versatile flex space is perfect for a home office or can accommodate a sofa bed. Enjoy a full-size front-load washer and dryer, expansive floor-to-ceiling windows, and a covered balcony offering stunning views of the city, park, and mountains. Amenities include a gym, party room, and rooftop garden on the 3rd floor. Steps from Coquitlam Centre, SkyTrain, restaurants, cafes, schools and Town Centre Park. Includes 1 parking spot and 1 locker.

KEY INFORMATION

MLS® R2933248

Residential Attached

North Coquitlam

1 Bedroom

1 Bathroom

625 SF

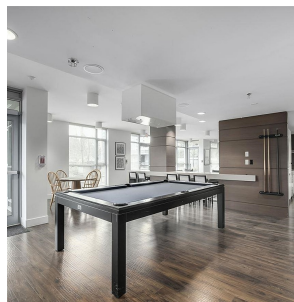
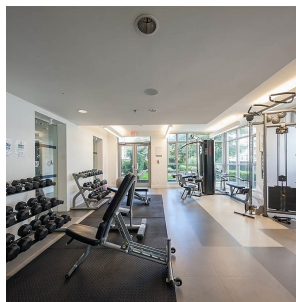
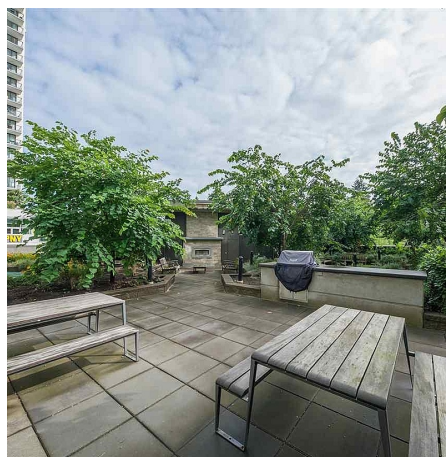
\$253.00 Maintenance Fees

FEATURES

Year Built: 2013

Views: City & Mountain Views

Listed By: RE/MAX Real Estate Services



rennie