

25792 Dewdney Trunk Road, Maple Ridge

\$3,800,000



A six acre Maple Ridge acreage located centrally between Maple Ridge and Mission in a fast growing area. The 1,372 square foot rancher features four bedrooms, two bathrooms, a single carport, and plenty of open room for additional outdoor parking. A second 600 sf dwelling with one bedroom and one bathroom is on the property in addition to the main home. As growth in the area continues, this property presents an excellent investment opportunity.

KEY INFORMATION

MLS® R2933905

Residential Detached

Websters Corners

4 Bedrooms

2 Bathrooms

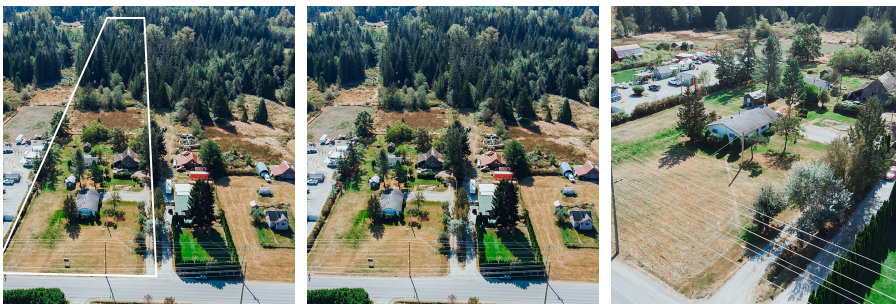
1,374 SF

261,360 SF Lot

FEATURES

Year Built: 1973

Listed By: Sotheby's International Realty Canada



rennie