

1 1731 Albert Ave, Victoria

\$369,980



JUBILEE Rosedale Manor is an attractive Heritage Conversion building dating from 1898, which was completely upgraded to code. This is a quiet residential neighbourhood close to shops, restaurants, coffee shops, parks & public transit. The suite is in good condition and has engineered wood floors, quartz counters, alder cabinets & stainless-steel kitchen appliances, plus in suite laundry and fantastic larger bathroom. All of the work has been done and the suite has a spacious bright layout ready to move in. There's a lovely veranda and garden spot at the entrance. Ample easy parking in front at street level and extra storage. Market rent for this wonderful place is close to \$2,000/mo. Self-managed, small strata with low strata fees under \$190 per month. Flexible possession. Great opportunity for 1-bedroom delightful condo conversion GARDEN SUITE. (id:56120)

KEY INFORMATION

MLS® 978226

Residential Attached

Jubilee

1 Bedroom

1 Bathroom

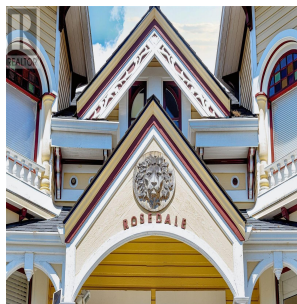
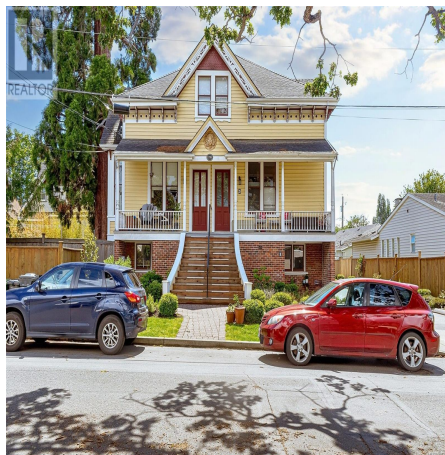
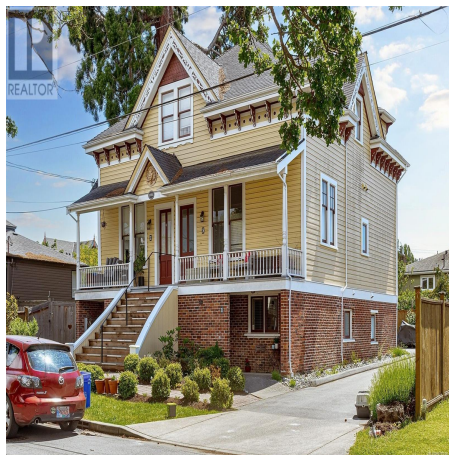
515 SF

515 SF Lot

FEATURES

Year Built: 2013

Listed By: Sutton Group West Coast Realty



rennie