

310 4821 Spearhead Drive, Whistler

\$2,339,000



This sensational ski-in/ski out exec. loft has just undergone a top-down renovation including all new plumbing, electrical, & fire suppression system. Conveniently located within walking distance to everything in the Blackcomb Benchlands, this beautiful mountain home offers a long list of well-appointed features. Custom oak millwork by SG Penny, large-scale graphite matte porcelain tiled bathrooms on both floors with matte black hardware, Fisher & Paykel appliances clad with custom oak, beautifully refinished oak hardwood floors by Tantalus Flooring, pass-through gas fireplace, covered deck, ample building storage, 2 dedicated parking spots, & a roof-top hot tub offering gorgeous views. The property comes fully furnished and is zoned for unlimited owner use including AirBNB night rentals.

KEY INFORMATION

MLS® R2935140

Residential Attached

Benchlands

2 Bedrooms

2 Bathrooms

1,065 SF

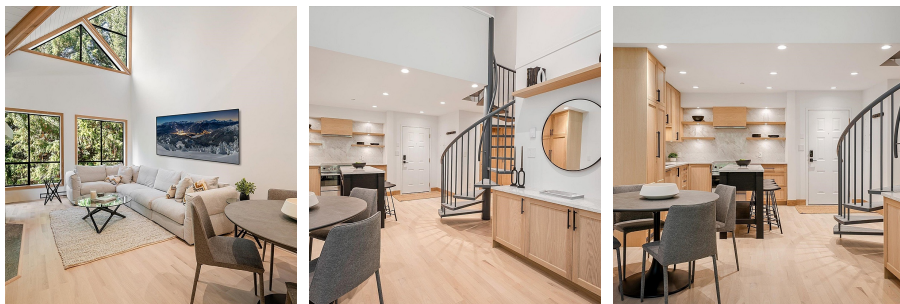
\$1,000.00 Maintenance Fees

FEATURES

Year Built: 1989

Views: Greenspace

Listed By: Angell Hasman & Associates Realty Ltd.



rennie