

# 995 Sutcliffe Court, Kelowna

\$1,099,900



Discover this exceptional 2,550 sqft home perfectly situated backing onto ALR land. Featuring a spacious main living area with some lake, city, and mountain views, this property is ideal for families. The upper level boasts three bedrooms, including a master suite with dual closets and a vaulted ceiling. The in-law suite is a fantastic addition, offering two bedrooms, a den, and a large games room complete with a wet bar, perfect for entertaining. The suite includes electric stove, dishwasher, bar fridge, and a stacking washer and dryer. Enjoy outdoor living on both the front and back decks or unwind in the hot tub. The INCREDIBLE shop features impressive 14-foot ceilings, gas heat, and ample power supply (100 amp in the shop and 200 amp in the house), making it perfect for any project. Recent upgrades in the last 10 years or so include new windows, a furnace, AC, and hot water tank. With two RV power plugs and tons of parking, this property offers both comfort and functionality. (id:56120)

## KEY INFORMATION

MLS® 10326093

Residential Detached

Rutland

5 Bedrooms

4 Bathrooms

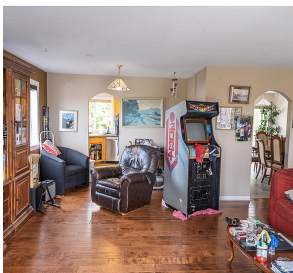
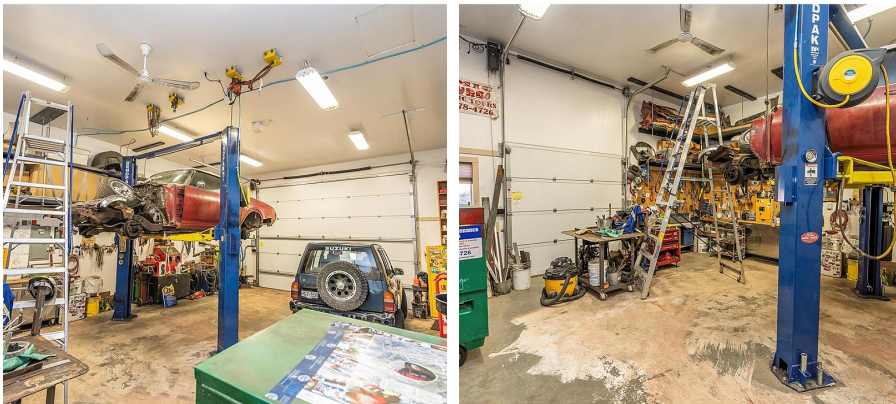
3,380 SF

10,890 SF Lot

## FEATURES

Year Built: 1990

Listed By: RE/MAX Kelowna



rennie