

5058 Linden Drive, Ladner

\$2,199,900



Introducing you truly exceptional property—one that beautifully blends luxury, functionality, and opportunity. Nestled in vibrant community, this custom-built home is not just a residence; it's a lifestyle. Stepping inside, you'll notice the open-concept living spaces that will invite natural light to dance through every room. The gourmet kitchen, complete with top-of-the-line appliances. But what truly sets this home apart are the two mortgage helper suites. They're designed with the same attention to detail as the main house. Beyond its impressive features, this home is an investment in your future. With the potential rental income from the suites, you can ease the financial burden of homeownership, making this not just a dream home, but a smart financial decision.

KEY INFORMATION

MLS® R2935102

Residential Detached

Hawthorne

6 Bedrooms

6 Bathrooms

3,200 SF

4,344 SF Lot

FEATURES

Year Built: 2025

Listed By: Century 21 Supreme Realty Inc.

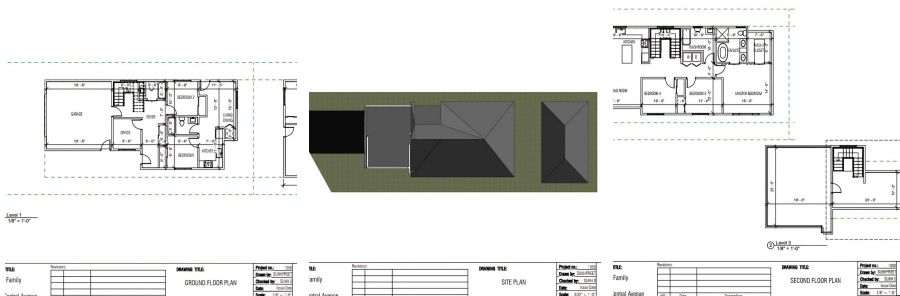


TABLE	REVISIONS	DATE	BY	REVISIONS	DATE	BY	REVISIONS	DATE	BY
Family				Family			Family		
Ground Floor				Site Plan			Second Floor		

