

74 19455 65 Avenue, Surrey

\$729,900



Welcome to highly desirable and family friendly 'Two Blue'. This RARELY available bright 2 bed/2 bath townhome, ideal for 1st time buyers/ downsizers, in the heart of East Clayton, has been well maintained. South facing unit features a formal LR/DR w/electric F/P, generous kitchen w/radiant heating plus FR leading to walk-out South facing backyard overlooking pocket park. 2 large bdrms/2 full baths on upper level include primary w/ ensuite w/ large shower & double sinks. Laundry on upper level. Forced air on main and baseboard heating upstairs. Double tandem garage w/ room for 2 cars plus storage. Ideal location close to Willowbrook Shopping Centre, Latimer Rd Elementary/Clayton Hts Secondary and future SkyTrain. Contact your REALTOR today!

KEY INFORMATION

MLS® R2935326

Residential Attached

Clayton

2 Bedrooms

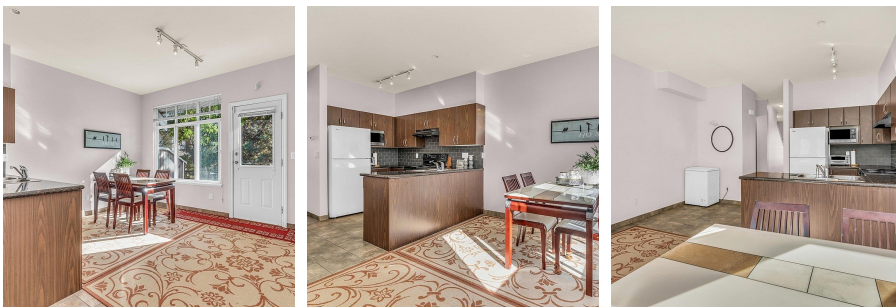
2 Bathrooms

1,304 SF

FEATURES

Year Built: 2007

Listed By: Evergreen West Realty



rennie