

# 305 1501 Richmond Ave, Victoria

\$559,000



This South East facing 2 bed/2 bath unit boasts an abundance of natural light. Spanning almost 1000 sq ft, you'll find this condo has ample space and plenty of storage. The dining room flows nicely into the living room where one can relax in front of the cozy fireplace. The patio is accessed from the kitchen and as you walk out of the galley kitchen, there's big double closets, one with a stacker washer/dryer, the other hosts a new hot water tank and plenty of available storage. Walking down the hall, you have the first bedroom on your left and the master directly ahead. The master has great closet space as well as a large 4 piece bathroom. The location itself is unbeatable... positioned at the crossroads of Fairfield/Rockland/Jubilee and Oak bay ave, one has everything they could possibly want at their finger tips; Jubilee hospital, grocery stores, pharmacy, ect. Secure parking could accommodate EV's. Bring a cat or dog up to 15lbs. Welcome home!! (id:56120)

## KEY INFORMATION

MLS® 978197

Residential Attached

Jubilee

2 Bedrooms

2 Bathrooms

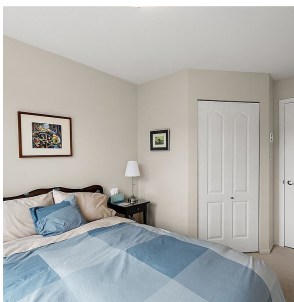
1,019 SF

1,012 SF Lot

## FEATURES

Year Built: 1992

Listed By: Coldwell Banker Oceanside Real Estate



rennie