

1403 Shoal Way, Squamish

\$989,000



Welcome to this newly completed two-bedroom townhome, ideally situated next to the Squamish Channel, offering stunning views of the Chief from your spacious back deck. Enjoy easy access to the recently finished Squamish seawall and nearby parkland, along with an upcoming pedestrian bridge connecting you to downtown for shopping and socializing. This master-planned community will feature a state-of-the-art amenities building with a pool, fitness center, co-working spaces, daycare, spa facilities, restaurants, and cafes. Inside, this BOSA-built home showcases a modern design with pot lights in the kitchen, stone countertops, luxury vinyl plank flooring, and air conditioning for added comfort. Don't miss this incredible opportunity—it's a must-see!

KEY INFORMATION

MLS® R2935755

Residential Attached

Brennan Center

2 Bedrooms

2 Bathrooms

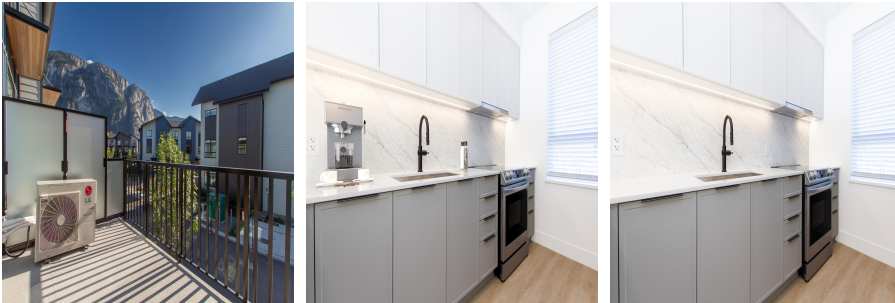
1,055 SF

FEATURES

Year Built: 2024

Views: The Chief & Mountains

Listed By: Stilhavn Real Estate Services



rennie