

# 524 2202 Gondola Way, Whistler

\$2,497,000



Ski In/Ski Out from this turnkey, 2 bedroom, 2 bathroom condo at the sought after First Tracks Lodge. Enjoy 2 outdoor hot tubs, outdoor pool, steam room, exercise room, bike locker, personal ski-locker as well as in suite laundry and a large owner storage closet in the unit and a private patio with views of Rainbow & Sproatt Mountain . Wake up to fresh tracks and a short stroll out your door where the Gondola meets you to take you up the mountain for a day of adventure! The First Tracks Lodge is located at the base of Whistler Mountain in Creekside Village and just a short walk to the shops, restaurants, and amenities. Strata fees include gas, hydro and cable. Enjoy unlimited personal use and a comprehensive rental management program.

## KEY INFORMATION

MLS® R2936087

Residential Attached

Whistler Creek

2 Bedrooms

2 Bathrooms

1,259 SF

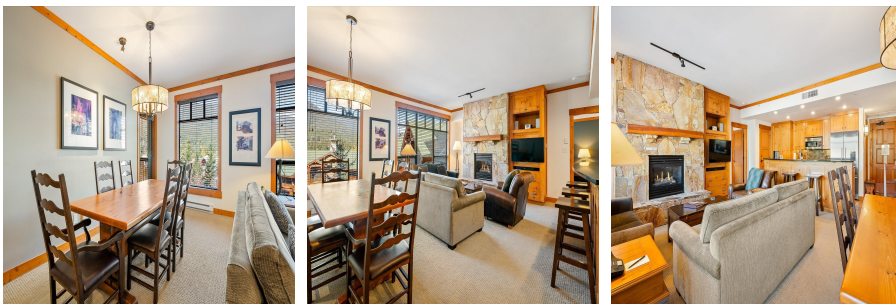
\$1,661.11 Maintenance Fees

## FEATURES

Year Built: 2002

Views: Rainbow and Sproatt Mountain

Listed By: Whistler Real Estate Company Limited



rennie