

5244 Marine Drive, Burnaby

\$2,999,000



Hot new asking price, \$900,000 below assessed value! The new SSMUH multiplex designation allows you to build up to 6 townhomes, duplexes or rowhouses on this R1 zoned lot! At 35,600 sq ft, the lot has 286' of frontage on Royal Oak and 125' of frontage on Marine Drive. This is a quiet location south of Marine Drive where Royal Oak terminates. The lot is so huge, each home could have its own huge 2,000 sq ft garden. If you are looking to innovate - call now. There are no other development opportunities in Burnaby or Vancouver like this unique offering. RS-1 zone is 25,000 SF and A3 zone is 10,500 SF of garden area. All lots in this area are split zoned. Cannot build on the A3.

KEY INFORMATION

MLS® R2936314

Land Only

Big Bend

0 Bedrooms

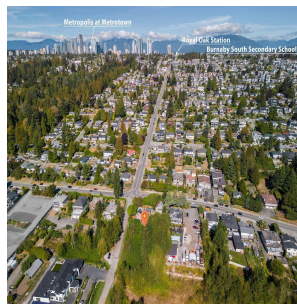
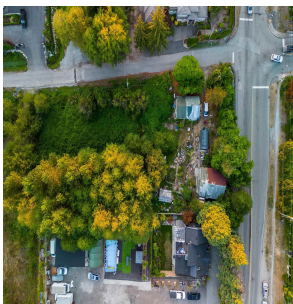
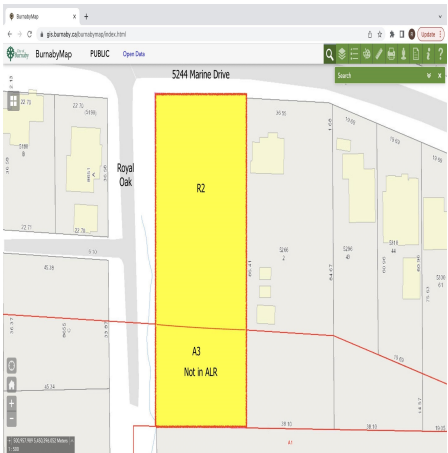
0 Bathrooms

0 SF

35.750 SF Lot

FEATURES

Listed By: Dexter Realty



rennie