

# 19069 90 Avenue, Surrey

\$2,425,000



Corner lot with an appealing rustic family home on 1.23 acres in the Port Kells area, close to the Anniedal Tynhead redevelopment plan. The property includes a barn, workshop, and outside shed, all within a fenced area. The large family home originally had four bedrooms but currently contains three, with the option to convert it back. The master bedroom enhances comfort with a cozy fireplace. The main floor features a spacious living area with an open kitchen and a sizable living room. A distinctive feature of this property is the small ravine leading to Old Sawmill Creek, a Class A watercourse, providing a natural and scenic boundary along the property's eastern edge. A great residential choice and holds potential for future redevelopment, making it a valuable investment.

## KEY INFORMATION

MLS® R2935803

Residential Detached

Port Kells

3 Bedrooms

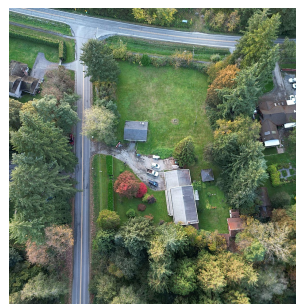
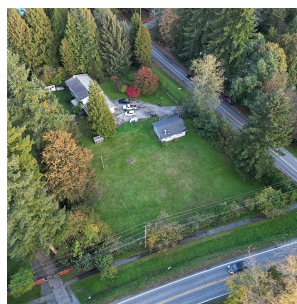
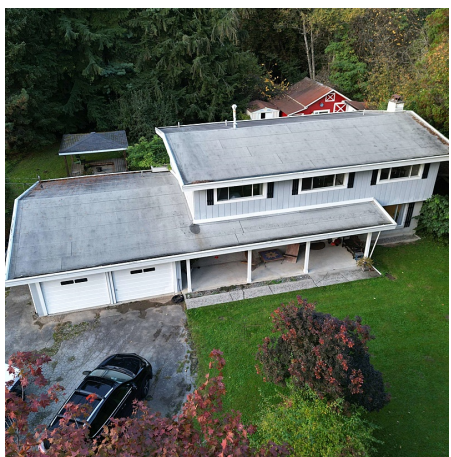
3 Bathrooms

2,526 SF

## FEATURES

Year Built: 1972

Listed By: NAI Commercial (Langley) Ltd.



rennie