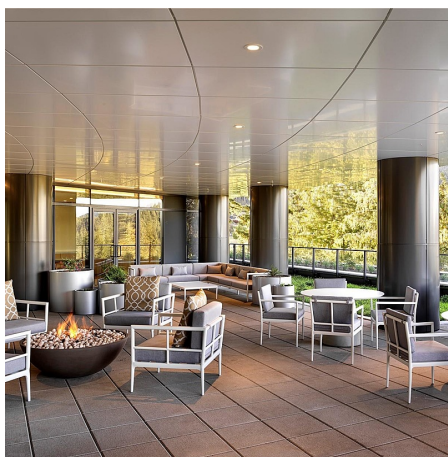


1206 2000 Hannington Rd, Langford

\$759,900



OH by APPOINTMENT every Sat&Sun (12-3pm)
Proudly Presenting The Magnificent ONE BEAR MOUNTAIN, a newly completed 18 storey resort-style living condominium where Luxury meets Quality constructions and High-end Finishings. Facing Northeast with unobstructed view of the greens, this 12th floor beauty showcases 2 beds, 1 bath, sizeable living room with gas fireplace and a designer kitchen that is equipped with Bosch appliances. Engineered Hardwood Floors throughout the home, custom entry closet, bench millwork and generous terrace. This home comes with 1 UG parking spot and locker. Discover Victoria's best amenities here with Sky lounge and Business Centre on the 16th floor, Panoramic heated Pool on the 15th, Concierge Service, Level 6 fully furnished Outdoor Terrace, Fitness+Yoga studio, Kayak and Bike Storage. Surrounded by Mt. Finlayson, World known Golf course, bike trails and Forest, this is THE place to be!
Developer's Inventory: more suites available!
(id:56120)



KEY INFORMATION

MLS® 978854

Residential Attached

Bear Mountain

2 Bedrooms

1 Bathroom

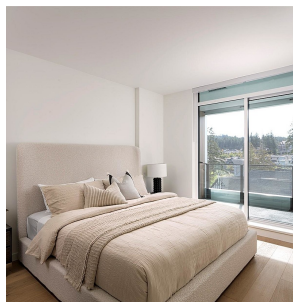
895 SF

895 SF Lot

FEATURES

Year Built: 2024

Listed By: DFH Real Estate Ltd.



rennie