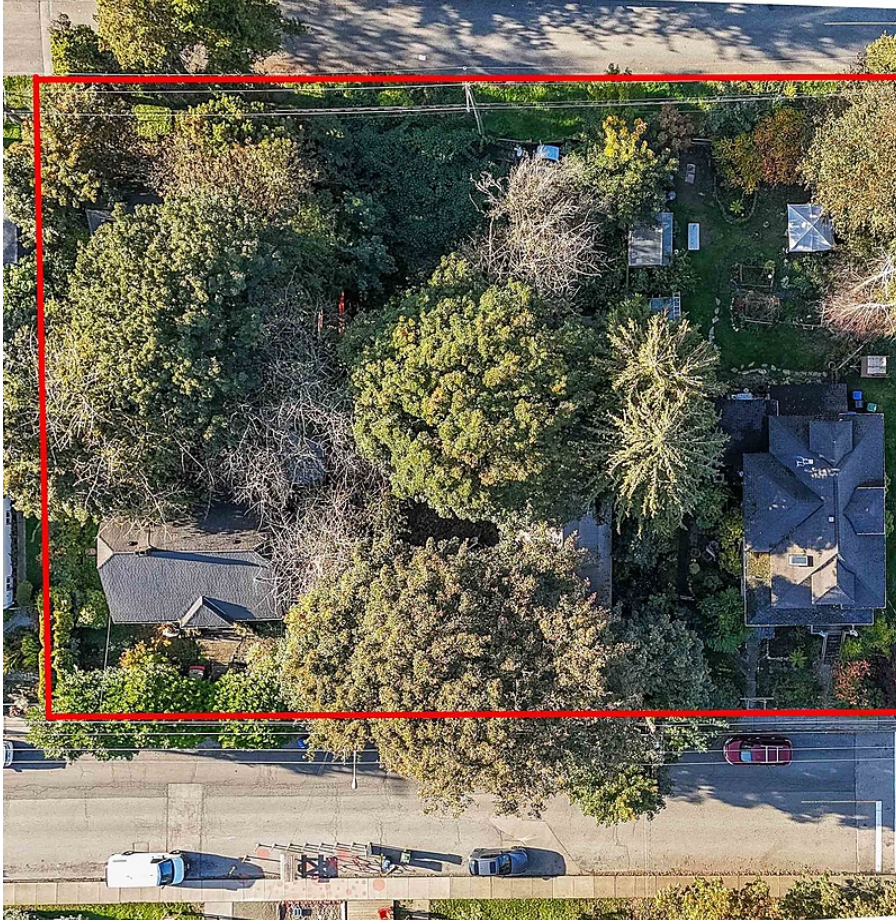


# 1001-1011 Fifth Avenue, New Westminster

\$8,100,000



Land Assembly steps from Moody Park. More than ½ an acre (~23,000 square feet) with potential for RGO (Residential Ground Oriented Infill) per OCP. Currently zoned RS-1. Within 400m of a FTN (Frequent Transit Network). FSR negotiable. Amazing central New West location at “The Brow of the Hill”, steps to Moody Park, shopping and transit. Great possibilities await in this fabulous neighbourhood. Opportunity to use preliminary plans and work with architect familiar with the property. Buyers to do their own due diligence with the City of New Westminster for all matters relating to the subject homes. Please do not walk on property.

## KEY INFORMATION

MLS® R2937223

Land Only

Uptown

0 Bedrooms

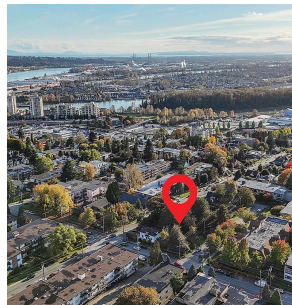
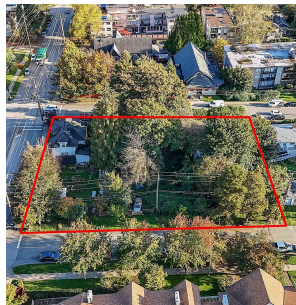
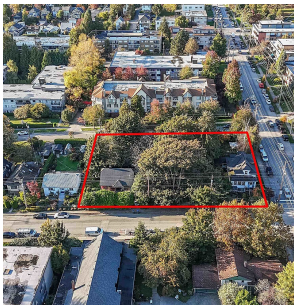
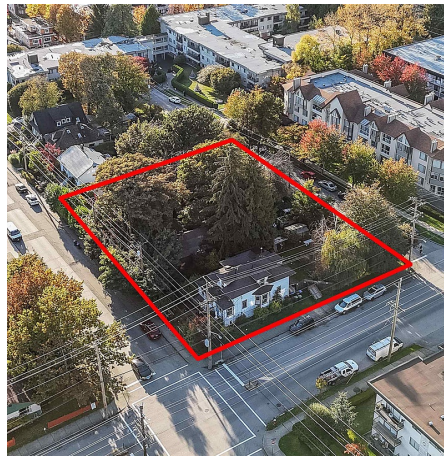
0 Bathrooms

0 SF

22,774 SF Lot

## FEATURES

Listed By: RE/MAX Real Estate Services



rennie