

5400 Cherrywood Drive, Chilliwack

\$1,379,000



Welcome to this beautifully updated two-story home with a basement, located on a quiet corner in Promontory. The main floor features formal and family living areas, along with a fully renovated kitchen and island, perfect for entertaining. A private den/office is situated off the entryway. Upstairs, there are three bedrooms, including a master suite with a stunningly upgraded ensuite. The finished basement boasts a two-bedroom plus den unauthorized walkout suite, offering ample storage and natural light. Enjoy mountain views from the covered deck or relax in the fully fenced backyard. With tasteful decor and large windows, this home is ready to be yours. OPEN HOUSE: Sat/Sun Oct 26/27 from 2-4PM.

KEY INFORMATION

MLS® R2937818

Residential Detached

Chilliwack

7 Bedrooms

4 Bathrooms

3,141 SF

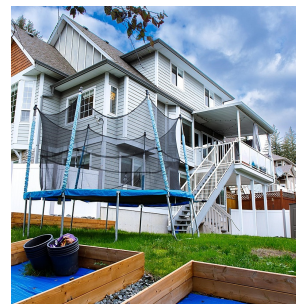
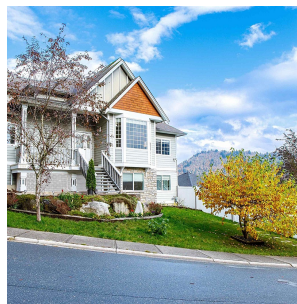
6,404 SF Lot

FEATURES

Year Built: 2006

Views: MOUNTAINS

Listed By: rennie & associates realty ltd.



Andy Mah PREC*
604.779.9382
amah@rennie.com
rennie.com/andymah

rennie