

# 3709 Skye Place, Port Coquitlam

\$1,299,900



Welcome to the highly sought-after Lincoln Park neighbourhood of Port Coquitlam! This well maintained & charming 4-bdrm, 2-bath home is bright & airy and offers 1,923 sqft of living space on a spacious 6,125 sqft flat corner lot. With 3 bdrms upstairs, this home features an updated kitchen & updated laminate flooring. Enjoy outdoor living on your huge covered deck! Tons of activities nearby with Sun Valley Park, Hyde Creek Rec Centre, Poco Trail, & Minnehada Park. Located near shopping at North Poco, Fremont Village, and Costco. Furnace & Hot Water Tank also recently updated. With a 1-car garage and room for your growing family, this home is a must-see in a fantastic community!

## KEY INFORMATION

MLS® R2937863

Residential Detached

Lincoln Park

5 Bedrooms

2 Bathrooms

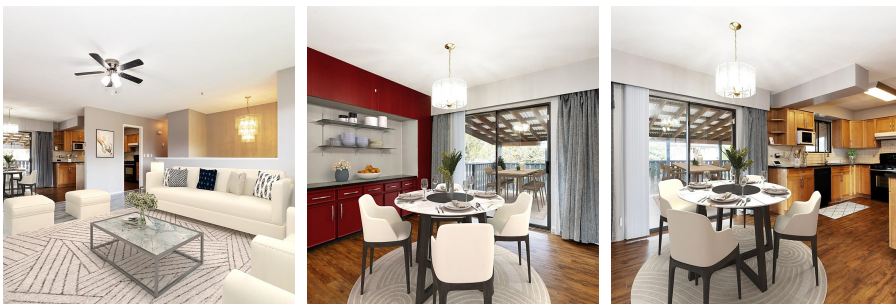
1,923 SF

6,125 SF Lot

## FEATURES

Year Built: 1971

Listed By: RE/MAX All Points Realty



rennie