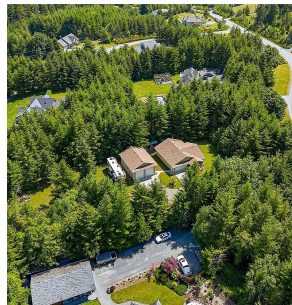


2912 Sarah Dr, Sooke

\$1,299,900



Open Sat Nov 16th, 12-2 pm. Be in by Christmas! New Price! Rancher! Huge Shop! Acreage! You're immediately impressed when you drive through the gates and see this Very Well Kept 1500 + sqft 2 Bed plus Den Spacious Rancher on full crawl space, located on 2+/- mainly flat private landscaped acres that backs onto Demamiel Creek just 5 minutes from Sooke Town Core. Featuring a Shop lover's dream with a Massive 27 ft x 36 ft 2 Bay Shop with 14 ft extra high ceilings + workshop area with its own 2 pcs bathroom - endless possibilities! The proximity of House, Shop, Boat, RV/5th Wheel was well thought out. (The tenant rents a spot for his 5th wheel, and pays \$1100/month if you are looking for a caretaker or income?) As you Enter the home there is a good sized Den/Office on your right, to the left is the Laundry room and access to a double car garage. The Open Kitchen, Dining, and Livingroom set up is ideal for entertaining! The kitchen has a smartly done island, the Dining area has sliding glass doors to the outside patio, Livingroom is great sized with a wood stove and also has a ductless heat pump for those really hot and cold days. The master Bedroom is Exceptional with a big walk in closet and classy ensuite. There is a 2nd bedroom that could easily fit a double bed. This property truly has to be seen to be appreciated. The property has a Bonus inground Cistern System. Located at 2912 Sarah Drive, Listed at 1,299,900 Sellers are motivated. (id:56120)

KEY INFORMATION

MLS® 979227

Residential Detached

Otter Point

2 Bedrooms

3 Bathrooms

2,953 SF

86,248 SF Lot

FEATURES

rennie