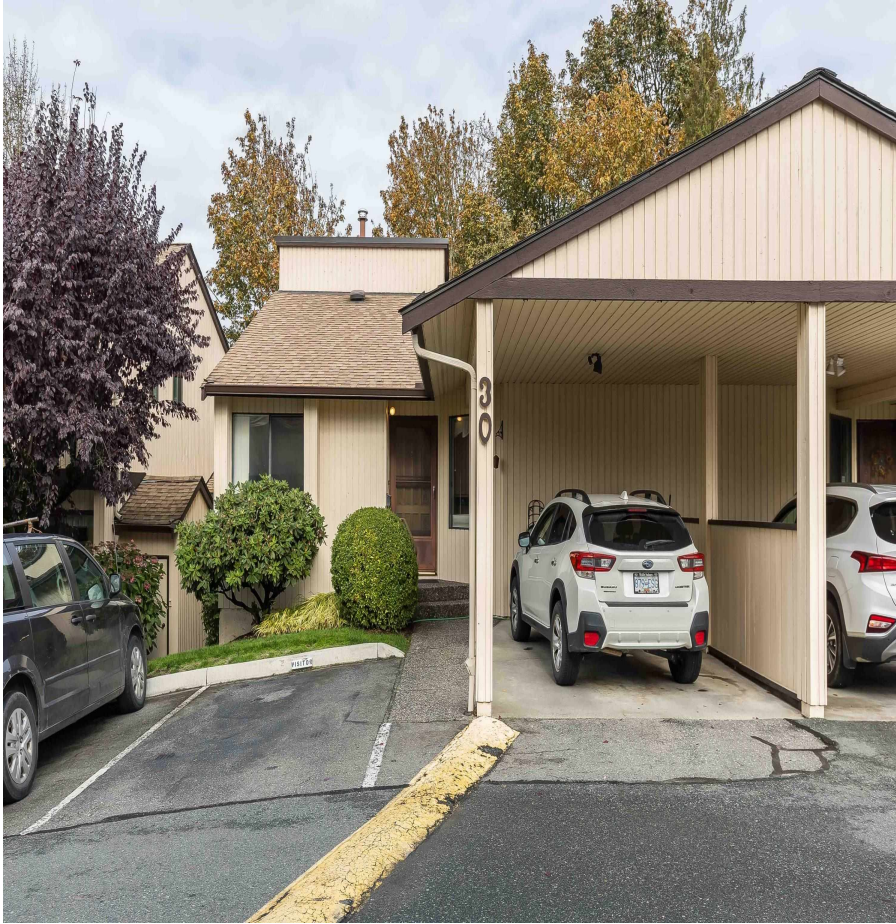


30 2962 Nelson Place, Abbotsford

\$609,900



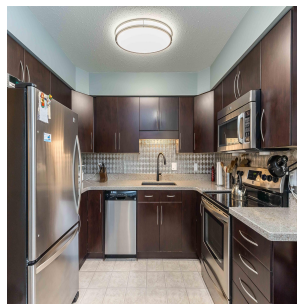
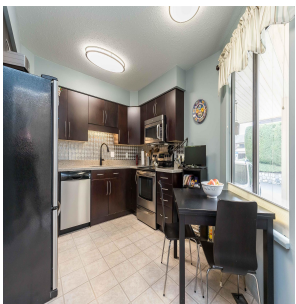
Karlan built WILLBAND CREEK PARK.....Rancher style living with a full walk out basement. This end unit has had some updates since new which are a newer kitchen with quartz counters, new high efficiency furnace and AC. All the living could be on the main floor including laundry. Downstairs has a family room with a cozy gas fireplace and another large bedroom with a full bathroom plus a large storage area and workshop. This unit backs on to a peaceful green space. The complex is located in central Abbotsford within walking distance to 7 Oaks Mall, Mill Lake, Banking and Restaurants. Horn Park is at your doorstep. 55 plus age restriction and smaller pets allowed.

KEY INFORMATION

MLS® R2938155
Residential Attached
Central Abbotsford
3 Bedrooms
3 Bathrooms
2,270 SF

FEATURES

Year Built: 1984
Listed By: RE/MAX Truepeak Realty



rennie