

40 8533 Cumberland Place, Burnaby

\$1,168,000



Welcome to Chancery Lane, located in the highly sought-after Cariboo neighborhood! This move-in ready, 3-bedroom, 2.5-bathroom townhome offers a rare feature—EV charging, one of the few units in this complex permitted to have it. The dining area seamlessly connects to the living room, with the kitchen featuring a serene greenbelt backdrop with upgraded dishwasher and fridge. The modernized master ensuite and powder room add a luxurious touch. Situated within the Armstrong Elementary and Cariboo Hill Secondary school catchments, this home is perfect for families. Enjoy easy access to HWY 1, Lougheed Highway, transit, nearby parks & trails. Don't miss your chance to make this fantastic home yours! Contact your agent to schedule a private showing or join us at the OPEN HOUSE Nov 17 2-4PM

KEY INFORMATION

MLS® R2938366

Residential Attached

The Crest

3 Bedrooms

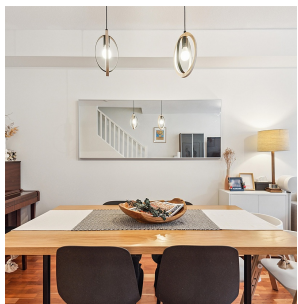
3 Bathrooms

1,346 SF

FEATURES

Year Built: 2006

Listed By: Grand Central Realty



rennie