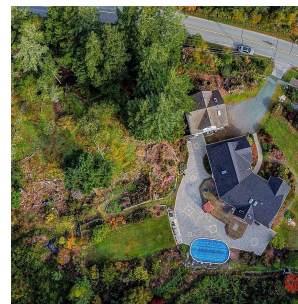
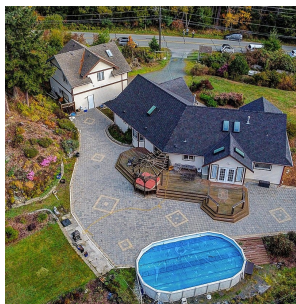
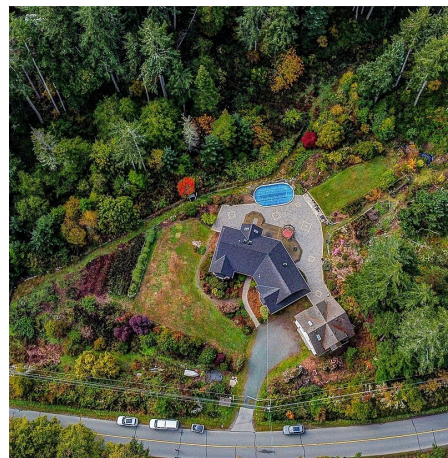


240 Pearson College Dr, Metchosin

\$1,625,000



This GORGEOUS 4.96 ACRE PIECE OF PARADISE offers the perfect balance of lushly treed landscape assuring privacy along with ample level, usable land with EXCELLENT SUN EXPOSURE. Well maintained (one owner) 2 bedroom & den RANCHER... PLUS bonus of detached oversized 29x27 double garage w/1 bedroom inlaw accom. (+ oversized garage attached to main home). *BONUS- ON CITY WATER! RV parking/second driveway (see supplements for road access permit/approval). TONS of usable outdoor space! HUGE entertainment sized patio complete w/pool & hot tub; well established (& drenched in sunlight) ornamental & VEGGIE/FRUIT gardens serviced by ample irrigation throughout the property. EASY OCEANFRONT ACCESS via trail across the road that takes you directly to Wiers Beach; 2.4km Pearson College nature loop walking trail at end of road; Galloping Goose access close by too! *Offer must be written subject to Seller obtaining copy of grant of Probate* All SqFt approx from floorplan-lot size from BC Asses* (id:56120)

KEY INFORMATION

MLS® 979169

Residential Detached

William Head

3 Bedrooms

4 Bathrooms

3,969 SF

216,057 SF Lot

FEATURES

Year Built: 2003

Listed By: Royal LePage Coast Capital - Chatterton

rennie