

# 200 21 Conard St, View Royal

\$499,500



This home offers it all! Bright corner 685sq' 2 bed, 2 bath home in a pet friendly (2 cats/2dogs/birds etc..), perfectly central green building. 2nd bed is small but fits full sized bed, closet could be added. Camden Green comes loaded with features including Geothermal radiant in-floor heating, endless hot water, concrete soundproofing, hardwood flooring, granite counter tops & stainless appliances. Enjoy the sunsets from your large west facing 12x7 deck. 1 secure underground parking space (2nd available for purchase). ! Heated secure storage & bike storage. Located across from Eagle Creek Village all of your grocery, shopping, YMCA gym, Tim Hortons, Starbucks and more are steps away. Central location to Uptown, downtown, Colwood/Langford and the peninsula. Whether you drive, bike, bus or walk it's all covered. Galloping Goose and Knockan Hill park are steps away, On major bus routes, and close to Victoria General Hospital & Camosun College. Book your appointment now before it's gone! (id:56120)



## KEY INFORMATION

MLS® 979415

Residential Attached

Hospital

2 Bedrooms

2 Bathrooms

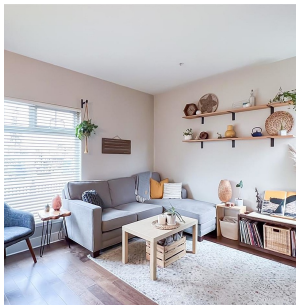
780 SF

780 SF Lot

## FEATURES

Year Built: 2011

Listed By: NAI Commercial (Victoria) Inc.



rennie