

# 301 3315 Cypress Place, West Vancouver

\$2,159,000



A SPECTACULAR SOUGHT AFTER END UNIT WITH SWEEPING WATER VIEWS! StoneCliff is a luxury complex on 10 private acres with walking trails. This "entertainment sized" 2 bdrm + den/bdrm has almost 500 sq. of private patio overlooking over 1000 sq. ft. of private, landscape, garden not accessed by other units + VIEWS! The open concept living, kitchen & dining areas inc. a gourmet kitchen with 6 burner stove with iron grates, stainless steel appliance pkg., 12' x 7' breakfast bar island with granite slab countertops, generous dining room & living room with a cozy gas f/p with timeless hardwood floors throughout. 7' stained maple entry doors, solid core interior doors, wall mounted cabinetry, fantastic primary suite. Rec centre, lounge & 2 guest suites etc. Private 2 car garage + Open Sun 2-4 pm

## KEY INFORMATION

MLS® R2938842

Residential Attached

Cypress Park Estates

2 Bedrooms

3 Bathrooms

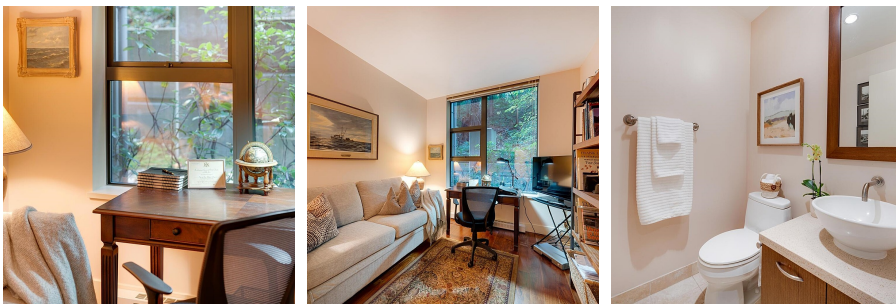
1,884 SF

\$1,147.80 Maintenance Fees

## FEATURES

Year Built: 2005

Listed By: Oakwyn Realty Ltd.



rennie