

2502 680 Quayside Drive, New Westminster

\$725,000



25th floor 1 Bed + Den in BOSA's brand new Pier West, New West's premier development. Waterfront living with incredible, unobstructed South Westerly views down the Fraser River and beyond. Bright, open concept living flooded with natural light plus AC and 9' ceilings. Luxurious kitchen w/ premium Bosch appliance package, integrated fridge and DW, soft close cabinetry, and quartz waterfall countertop. Unparalleled resort styled amenities incl. concierge, fitness ctr, sauna + steam room, clubhouse w/ chefs' kitchen, dining rm & outdoor lounge. Central location w/ transit, grocers/markets, restaurants, and the riverside Pier Park and Boardwalk just steps away. 2-5-10 warranty in place w/ 1 Parking + 1 Storage locker included.

KEY INFORMATION

MLS® R2938928

Residential Attached

Quay

1 Bedroom

1 Bathroom

661 SF

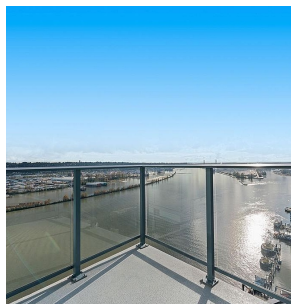
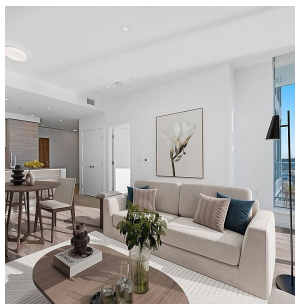
\$338.26 Maintenance Fees

FEATURES

Year Built: 2024

Views: South Westerly Fraser River

Listed By: RE/MAX Crest Realty



rennie