

1207 7388 Sandborne Avenue, Burnaby

\$998,000



For more information, click the Brochure button below. Rarely available: 3-bedroom, 2-full-bathroom, southeast-facing corner unit with breathtaking views from all bedrooms and the living room. This 9' high-ceiling unit features one balcony and one sundeck (exclusive to this level), laminate flooring, and a gas fireplace. Just a 5-minute walk to Edmonds SkyTrain station. Quality construction building - managed by a proactive strata.

KEY INFORMATION

MLS® R2938966

Residential Attached

South Slope

3 Bedrooms

2 Bathrooms

1,105 SF

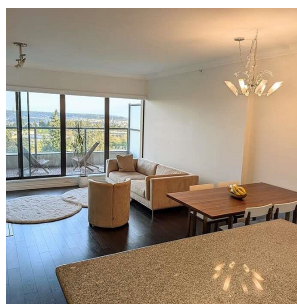
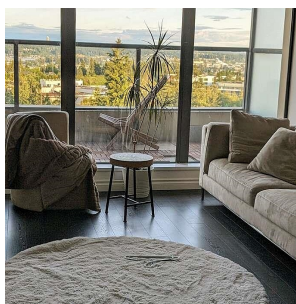
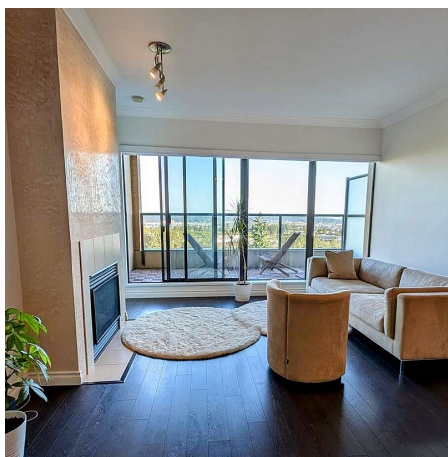
\$613.00 Maintenance Fees

FEATURES

Year Built: 2002

Views: CITY, MOUNTAIN AND PARKS

Listed By: Easy List Realty



rennie