

8 8168 136a Street, Surrey

\$969,000



Experience refined living at Kings Landing II by Dawson + Sawyer. This expansive 3-storey townhouse offers 4 spacious bedrooms, 4 bathrooms, and a side-by-side double garage. Living Room: The sunken living area boasts impressive 10' ceilings, creating a bright, open ambiance. Kitchen: Centrally located, the kitchen features a large island ideal for cooking and entertaining. Primary Suite: Generously sized to fit a king bed, with a walk-through closet and private ensuite featuring a double vanity and oversized shower. Residents enjoy access to an exclusive clubhouse, perfect for gatherings and recreation. Conveniently located near public transit, Bear Creek Elementary, Bear Creek Park, and shopping.

KEY INFORMATION

MLS® R2939292

Residential Attached

Bear Creek Green Timbers

4 Bedrooms

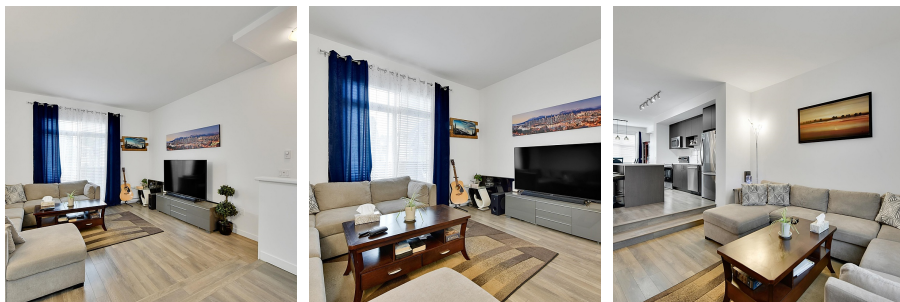
4 Bathrooms

1,570 SF

FEATURES

Year Built: 2020

Listed By: RE/MAX Blueprint



rennie