

102 41328 Skyridge Place, Squamish

\$1,288,800



Luxury single level living in Skyridge! The SE corner home with views offers 3 large beds, 2.5 baths, a den, laundry room and tons of in-suite storage. This home lives large at 1,454sf. A unique corner layout offers two primary suites - both with walk in closets and direct access to a private bath. High-end finishings throughout include hardwood flooring, ceilings up to 8'10, cozy gas fireplace, expansive windows and house size entertaining spaces. This first level home offers two entry points - one from the building & direct access to your private patio. 2 park & 2 lockers included. Pets and rentals allowed! Located next to Alice Lake Park, enjoy unparalleled access to hiking, running and biking trails. Only 44 homes, Sky Suites in the perfect Squamish home base.

KEY INFORMATION

MLS® R2939400

Residential Attached

Tantalus

3 Bedrooms

3 Bathrooms

1,454 SF

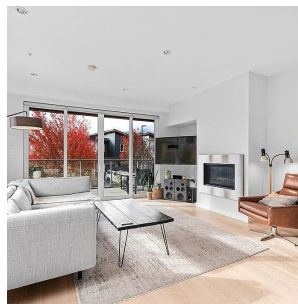
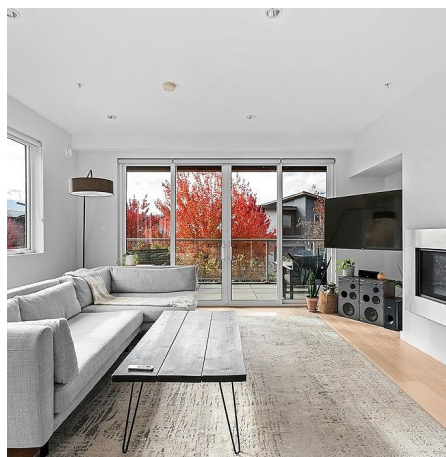
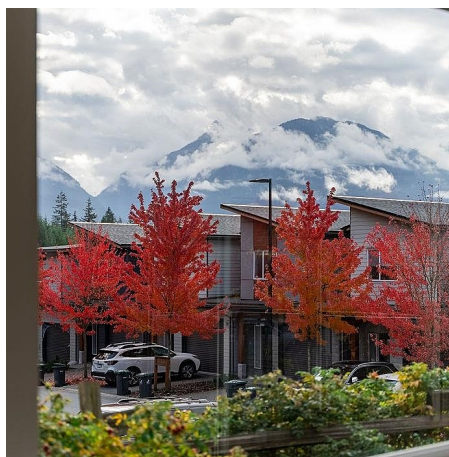
\$723.07 Maintenance Fees

FEATURES

Year Built: 2020

Views: Mountain

Listed By: Stilhavn Real Estate Services



rennie