

# 3569 McInnis Rise, Saanich

\$1,100,000



Located in an enclave of 14 bare-land strata properties at the top of McInnis Rise & on the market for the 1st time in 34 yrs, this “diamond in the rough” offers the perfect opportunity to bring this 4bed/3bath residence back to its former glory. Spacious entry leads to a large, entertainment sized living rm w/deck & lovely north/northwest views toward the Malahat (beautiful sunsets!), separate dining rm, family rm w/FP, kitchen w/ eating nook, two bdrms, 4pc bath & the laundry rm. Primary bdrm is upstairs on its own level (walk-in closet, full ensuite bath, private deck) while downstairs in the walk-out lower level is a big rec rm w/rear yard access, 4th bdrm, 3pc ensuite bath (possible in-law suite?), den/office, flex-room & lots of storage. Double garage plus extra parking in the driveway, mature landscaping, strata tennis court. Bring your builder/renovator & take a look, lots of potential here! Please confirm all important measurements & details. (id:56120)

## KEY INFORMATION

MLS® 979494

Residential Detached

Maplewood

4 Bedrooms

3 Bathrooms

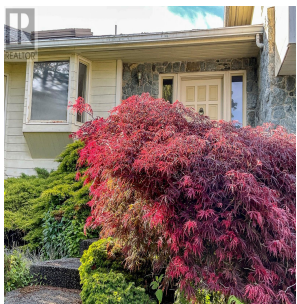
3,610 SF

6,003 SF Lot

## FEATURES

Year Built: 1986

Listed By: DFH Real Estate Ltd.



rennie