

301 201 Nursery Hill Dr, View Royal

\$549,900



Welcome to the ASPEN on Nursery Hill! This 3rd floor, 2-bedroom, 2-bathroom condo is ideally located at Lakeside Village, adjacent to the Galloping Goose Trail and steps from Thetis Lake Park. Freshly painted, the spacious floor plan features 9ft ceilings and an open-concept kitchen with granite counters and stainless steel appliances, overlooking the living/dining area with a cozy fireplace. The large primary suite offers a walk-in closet and a 4pc ensuite bath. Additional features include in-suite laundry, secure underground parking, a fitness facility, and a separate storage locker. This pet-friendly complex allows up to 2 dogs or cats with no size restrictions. Perfect for outdoor enthusiasts, with easy access to the highway, transit, trails, and all desired amenities, and just 15 minutes to both downtown Victoria and the Westshore! (id:56120)

KEY INFORMATION

MLS® 978540

Residential Attached

Six Mile

2 Bedrooms

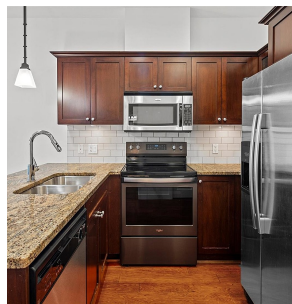
2 Bathrooms

915 SF

FEATURES

Year Built: 2008

Listed By: Newport Realty Ltd.



rennie