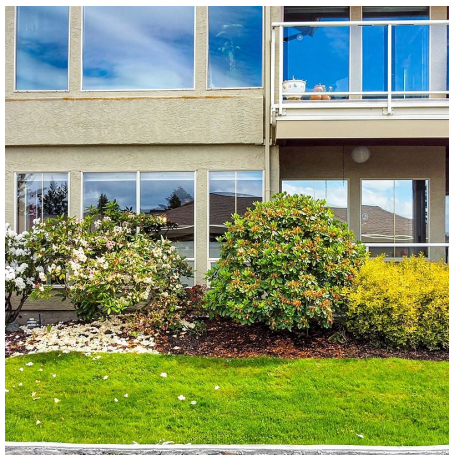


507 6880 Wallace Dr, Central Saanich

\$849,900



NEW LISTING ALERT! Now priced at BC Assessment value, making it one of Greater Victoria's best deals! Welcome to PORT ROYALE ESTATES in Brentwood Bay, a prestigious gated community where privacy and charm come together beautifully. This spacious 2-bedroom, 2-bathroom townhome offers a thoughtfully designed layout and fantastic updates throughout. The expansive primary bedroom fits a king-size bed, featuring a custom walk-in closet and a stunning ensuite. The kitchen has been tastefully upgraded with new granite countertops, updated cabinetry, lighting, and modern appliances. Enjoy the bright and inviting living space, complete with a patio door that opens onto a vast, covered patio with lovely garden views. The second bedroom is fitted with a built-in Murphy bed, and there's a dedicated office with French doors, a large laundry room, and a full dining room. Unique to this unit is a private driveway and parking, with no side neighbours, situated on a quiet, no-through road. Steps away from Anglers Anchorage Marina, walking trails, and just minutes from Butchart Gardens, this home combines the serenity of nature with the convenience of nearby amenities. A perfect blend of community and privacy awaits you here! (id:56120)

KEY INFORMATION

MLS® 979653

Residential Attached

Brentwood Bay

2 Bedrooms

2 Bathrooms

1,404 SF

1,405 SF Lot

FEATURES

Year Built: 1989

Listed By: Keller Williams Realty VanCentral

rennie