

106 200 Nelson's Crescent, New Westminster

\$584,900



Where style meets functionality & lifestyle, a 253 sq ft patio, surrounded by beautiful shrubs & trees. New kitchen - elegant marble tiled backsplash, high-end Fisher & Paykel appliances, professional 5-burner range. 9'8" ft ceilings & wide-plank engineered hardwood floors create a spacious, modern vibe, while floor-to-ceiling windows flood the living room & bedroom with natural light & views of your patio. The large spa inspired bathroom boasts quartz counters, a sleek porcelain sink, & a luxurious soaker tub. ADA Adaptable unit making this space as practical as it is stylish. Amenities: shared garden plots, play area, outdoor dining & social space, 1,000 sq ft rooftop terrace lounge with, fireplace, BBQ, & dining area, fitness centre, yoga room, squash court, party room, dance studio....

KEY INFORMATION

MLS® R2939707

Residential Attached

Sapperton

1 Bedroom

1 Bathroom

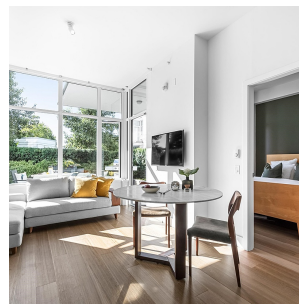
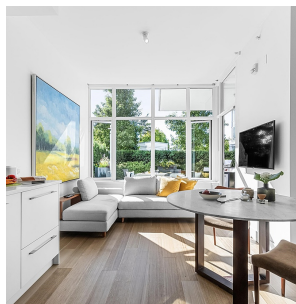
546 SF

\$401.78 Maintenance Fees

FEATURES

Year Built: 2017

Listed By: Sotheby's International Realty Canada



rennie