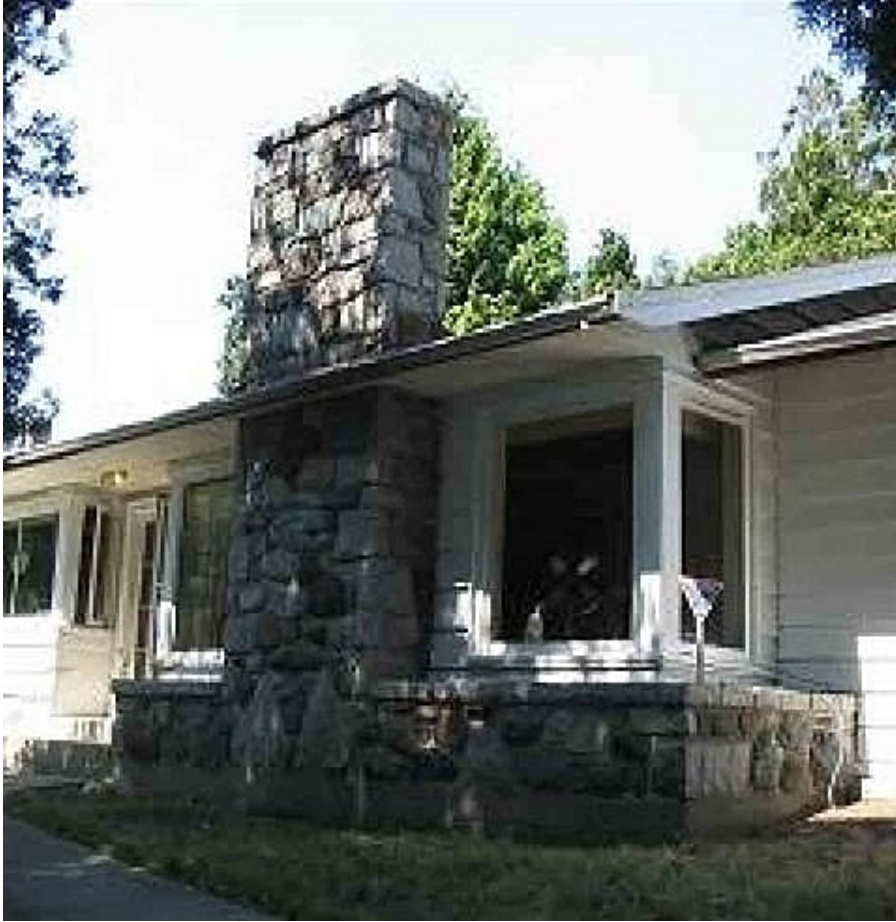


# 1911 Marine Way, New Westminster

\$3,999,900



Developers alert! Opportunity to acquire 2 or more lots for redevelopment of a 6-storey condo development. The purpose of the Inclusionary Housing Policy is to help meet the City's affordable rental housing needs by securing built below-market and non-market rental units in new multi-unit strata residential and mixed-use residential developments seeking additional density. Buyer to verify with the City. This site is conveniently located near the 22nd Street Skytrain station. With the asking price and development at 2.5 FSR, the price per buildable sets this at a favourable number for redevelopment.

## KEY INFORMATION

MLS® R2939867

Residential Detached

West End

2 Bedrooms

1 Bathroom

1,069 SF

4,556 SF Lot

## FEATURES

Year Built: 1951

Listed By: eXp Realty