

33474 Hawthorne Avenue, Abbotsford

\$1,199,900



"Attention developers! Subdividable property with PLA approved for 2-lot subdivision. Currently rented to excellent tenants, this property is located in one of Abbotsford's prime areas near UFV, shopping complexes, and with easy access to Highway 1

KEY INFORMATION

MLS® R2939643

Residential Detached

Poplar

3 Bedrooms

2 Bathrooms

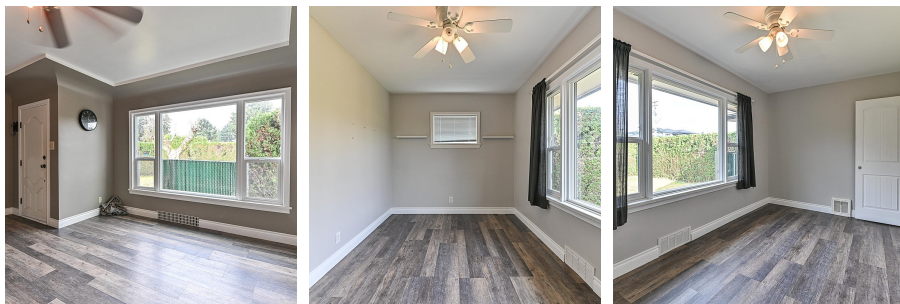
1,650 SF

8,121 SF Lot

FEATURES

Year Built: 1954

Listed By: Century 21 Coastal Realty Ltd.



rennie